

| Parts List | | | | | |
|------------|-----|----------|--|---|--|
| ITEM | QTY | PART No. | TITLE | WEBLINK | |
| 1 | 1 | BB3819 | Alu Box Assy for Gear Box Cl. 7 | N/A | |
| 2 | 1 | BB1680 | Insert Class 6 | N/A | |
| 3 | 1 | BB1679 | Protection Nose Class 7 Long | N/A | |
| 4 | 1 | BB1678 | Planetary Carrier Class 7 Extension Long | N/A | |
| 5 | 1 | BA6403 | Class 7 Gear Box 40kNm | http://e-sea.bluelogic.no/main.aspx?page=article&artno=BA6403 | |
| 6 | 4 | 101020 | Washer | | |
| 7 | 4 | 100851 | Bolt | | |
| 8 | 2 | 100188 | Bolt | | |
| 9 | 1 | BC1793 | Lock Assy Class 7 Gear Box | | |

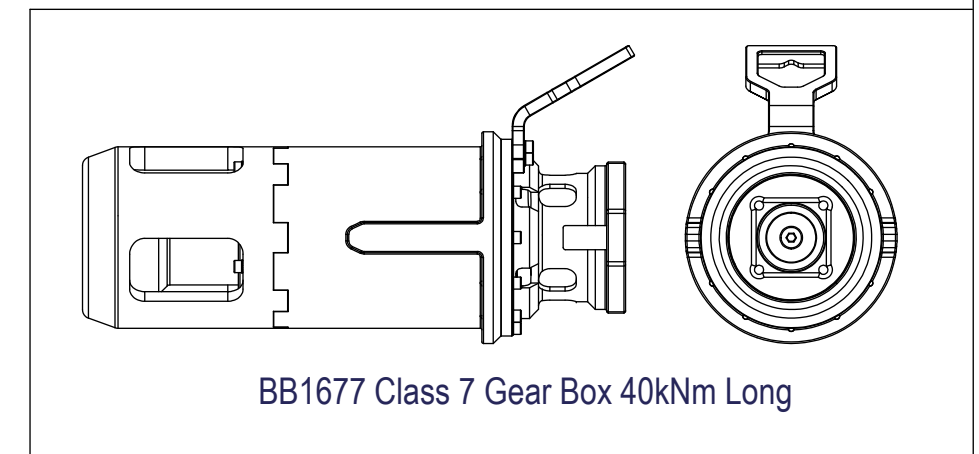
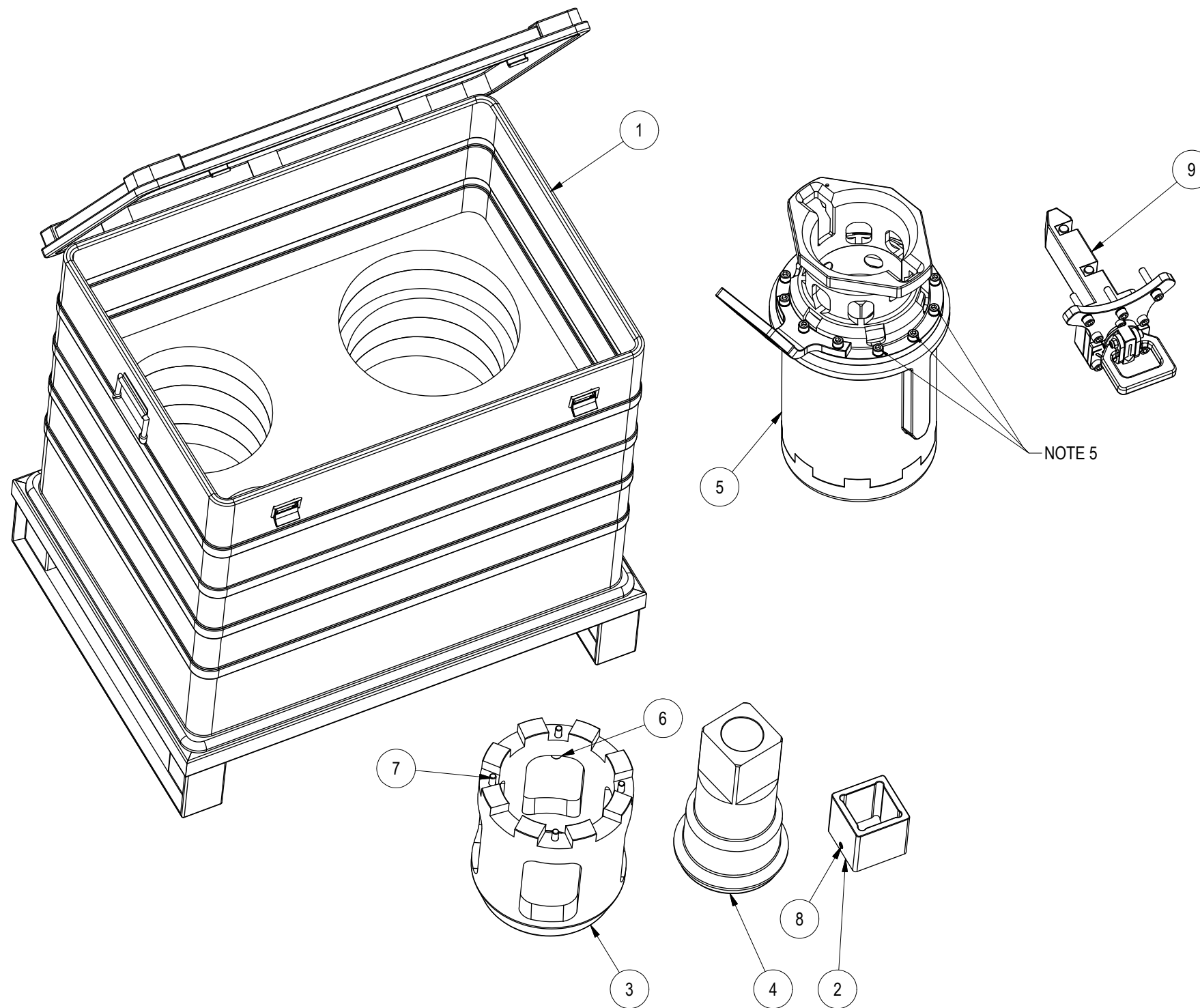
NOTE: 1
 DESIGN CODE:
 ISO 13628-8/API 17H

NOTE: 2
 TECHNICAL CLASSIFICATION:
 Article Type: 008-Actuation
 Main Group: 8.03. ISO-6-7 Actuation
 Intermediate Group: 8.46.04. Test Jig
 Sub Group: 8.46.134.02. Intervention

NOTE: 3
 INTERFACE INFORMATION:
 Pressure Rating Bar: 300
 Material: N/A
 Weight: 128,1 kg
 Volume: 133,92 dm³
 Surface Area: 156436 cm²
 Hydraulic: N/A
 Mechanical: ISO/API 17H Class 4 and Class 7
 Electrical: N/A
 Com. & Protocol: N/A

NOTE: 4
 ADDITIONAL INFORMATION:
 Mechanical Gear box with ISO Class 4 input and ISO Class 7 output
 40kNm torque capacity.
 The gearbox can be configured for Class 7 short and long.
 A square insert is delivered to also meet Class 6 dimensions.
 Gear ratio can be either 14.31:1, 6.0:1 or 3.79:1 for maximum flexibility.

NOTE: 5
 When using Item 9 BC1793 Lock Assy Class 7 Gear Box,
 install lock in position indicated or 180 degrees apart.
 Replace 3ea. existing bolts on gear box with 3ea. M10 x
 50 bolts coming with lock assy.



BB1677 Class 7 Gear Box 40kNm Long

| Rev. | Date | Reason for issue | Revision change | Made | Chk'd | Appr. |
|------|-----------|------------------------|-----------------|------|-------|-------|
| 01 | 15.8.2025 | 9-IFU (Issued for Use) | | HNJ | LGH | HNJ |



| | |
|-------------------|---|
| Dwg Scale: NTS | Drawing title: Gear Box Cl. 7 40kNm Arrangement with Optional Lock |
| Dwg Proj: A3 | Drawing number: BC3031 |
| | Rev: 01 |